



WRIGHT MOWERS

INSTALLATION AND OPERATING INSTRUCTIONS



Humboldt Specialty Mfg. Co.
1810 Read St.
Omaha Ne. 68112
www.grasscatchersusa.com
Phone (402) 397-1154
FAX (800) 411-4288

LAB154044
REV A (8/7/2012)

SYSTEMS COVERED BY THIS MANUAL

2012 MODELS

48" DECK

- 305 014 012 (2 BAG)

52" DECK

- 305 014 013 (2 BAG)
- 305 014 014 (3 BAG)

61" DECK

- 305 014 015 (3 BAG)

THE FOLLOWING MANUAL(S) WILL BE USED IN ADDITION TO THIS MANUAL
(DEPENDING ON APPLICATION)

- LAB154075 (GENERIC 2-BAG INSTALL)
- LAB154076 (GENERIC 3-BAG INSTALL)
- LAB154082 (GENERIC 18" BLOWER)

ADVICE AND CAUTIONS ON THE USE OF HUMBOLDT SPECIALTY MANUFACTURING CO. GRASS AND LEAF COLLECTION SYSTEMS

Humboldt Specialty Manufacturing Co. designs and manufactures Grass and Leaf collection systems for many brands of Zero Turn Mowers, Compact Tractors, and Walk Behind Lawn Mowers. All of our products are tested under a multiplicity of conditions. They are not guaranteed to perform optimally under any and all conditions!

Depending on the time of year, makeup of the grass, moisture, depth of cut, speed of mowing or cleaning and the horsepower available, the performance of your grass catcher will vary. Humboldt catchers perform well in most situations but not all! During periods of lush grass, wet grass, leaves or other factors, you may have to adjust your mowing to fit the conditions. The use of special hi-lift blades is also recommended in most conditions. During leaf cleanup some systems work better with mulching blades. Check your system to assure proper grass catcher system installation.

Clogging of catchers, although infrequent, can happen in any condition. If this should occur, all Humboldt hoses are secured with a quick clip attachment which allows clearing a clog quickly and without tools.

Machines are equipped with many different brands of horsepower rated engines and various hydraulic systems. There is, for many mowers, a point where the weight of the mower, operator, catcher system and the clippings or leaves can start to effect the operation of the machine and life of drive components. This is particularly true if you are mowing on non-level terrain. If this should occur you will have to compensate by decreasing depth of cut, not filling the bags or hopper to full capacity or slowing the speed of mowing.

The Humboldt products described in this publication are designed and manufactured so that they will work on the mowers/tractors described. Humboldt Specialty Mfg. Company is not associated with the manufacturer of the mower/tractor nor is the mower/tractor manufacturer involved in the adaptation of Humboldt products for use on their machines.

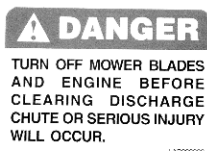
Safety Label Information



Warning: Thrown Objects
Keep area clear of people and pets
Remove objects blade may throw
Stop blades when crossing gravel areas



Danger: Rotating Blades
Keep hands and feet away
Stop engine and let blades stop
before clearing a clog



Danger:
Turn off mower blades and engine
before clearing discharge chute or
serious injury will occur

Safety Information

NOTICE!!!

Unauthorized modifications may present extreme safety hazards to operators and bystanders and could also result in product damage.

OPERATING SAFELY

Do not operate the machine without either the discharge chute or the grass catcher fully installed. Stop the engine, disengage the PTO and wait until the blades quit rotating before removing the grass catcher.

Stop the engine, disengage the PTO, and remove the key when stopping operation to clear blockages, unclog, inspect the attachment, or do maintenance or repair.

If the machine begins to vibrate abnormally or make abnormal sounds, stop the engine and disengage the PTO. Inspect the attachment and have necessary repairs performed by a qualified technician.

Use extra care with grass catchers. These attachments can change the stability of the machine as well as dynamically altering the stability during operation. Read and understand all operation and safety precautions associated with operating your machine on slopes and in other hazardous conditions. Do not attempt to exceed these recommendations with your grass collection system attached.

Only operate the catcher attachment with all guards fully installed.

Inspect grass catcher components regularly. If worn, damaged or deteriorated, they may expose moving parts or allow objects to be thrown.

Mow only in daylight.

Check operator presence interlock system and brake operation prior to each days use. Adjust or repair any problems before using.

Clear the area to be mowed of objects such as rocks, toys, wire, or other debris that may be picked up or thrown by the catcher.

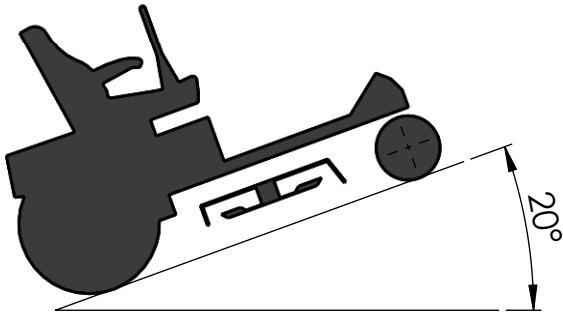
Be sure the area is clear of pets and people, especially young children. Never assume they will remain where you last saw them. Stop the machine if any enter the area.

Evaluate the terrain to determine if the machine can safely perform the job. Remember that slopes and irregular terrain may cause tires to lose traction resulting in loss of control. Use extreme caution on wet grass, as this will increase the risk.

HOW TO USE YOUR BAGGING SYSTEM

Your Humboldt Bagging System is designed to function in a variety of conditions, each of which will need a slightly different approach for the equipment to perform at its highest possible level.

Always remember - **SAFETY FIRST** -



SLOPES AND UNEVEN TERRAIN

- NEVER MOW ON SLOPES OVER 20° WHEN USING A BAGGER
- AVOID MOWING ACROSS A SLOPE, USE DIAGONALS OR GO UP AND DOWN



AIR FLOW AND MOWING

- MOWERS ARE NOT VACUUMS, AIR NEEDS TO GET TO THE DECK IN ORDER FOR IT TO FUNCTION
- KEEP AT LEAST A 1" GAP FROM THE FRONT OF THE MOWER DECK AND THE THATCH LAYER OR GROUND
- MAINTAIN A 2" - 3" FINAL CUT HEIGHT

TIPS & TRICKS TO BAGGING

NORMAL MOWING CONDITIONS

- Use a 2" - 3" final cut height
- The faster you mow the lower the cut quality
- Overlap your cut path by at least 10% of deck width

HEAVY, TALL or THICK GRASS

- Avoid cutting more than 3" of grass from your lawn in any single pass
- Make multiple passes at different heights in overgrown areas to get to a final cut
- Some areas will need to be cut without bagging on the first pass, then go over the area again to collect the clippings

WET CONDITIONS

- Avoid cutting in wet conditions when possible
- Wet grass or leaves build up under the deck and inside the blower, CLEAN AFTER THIS TYPE OF USE
- Wet conditions create ideal opportunities for clogging a bagger, mow higher and go slower

DRY CONDITIONS

- Cutting in dry conditions creates dust
- The bagger may appear to have 'leaks' that weren't there during normal operations due to dry conditions
- Dry lawns don't grow very fast, reduce mowing frequency and increase watering if possible

LEAF SEASON

Collecting leaves is much different than collecting grass clippings. Use this technique to make your Fall and Spring cleanup as easy as possible.

- Allow the bagger to clog - then use your mower as a mulcher - this allows for better cutting of the leaves and easier collecting
- Once all the leaves have been mulched, clear your clog and make another pass, you will actually bag a greater volume of leaves this way
- Large wet leaves weigh more than grass of the same volume, lift bags carefully

WRIGHT

WEIGHT INSTALLATION 52" & 61" DECK

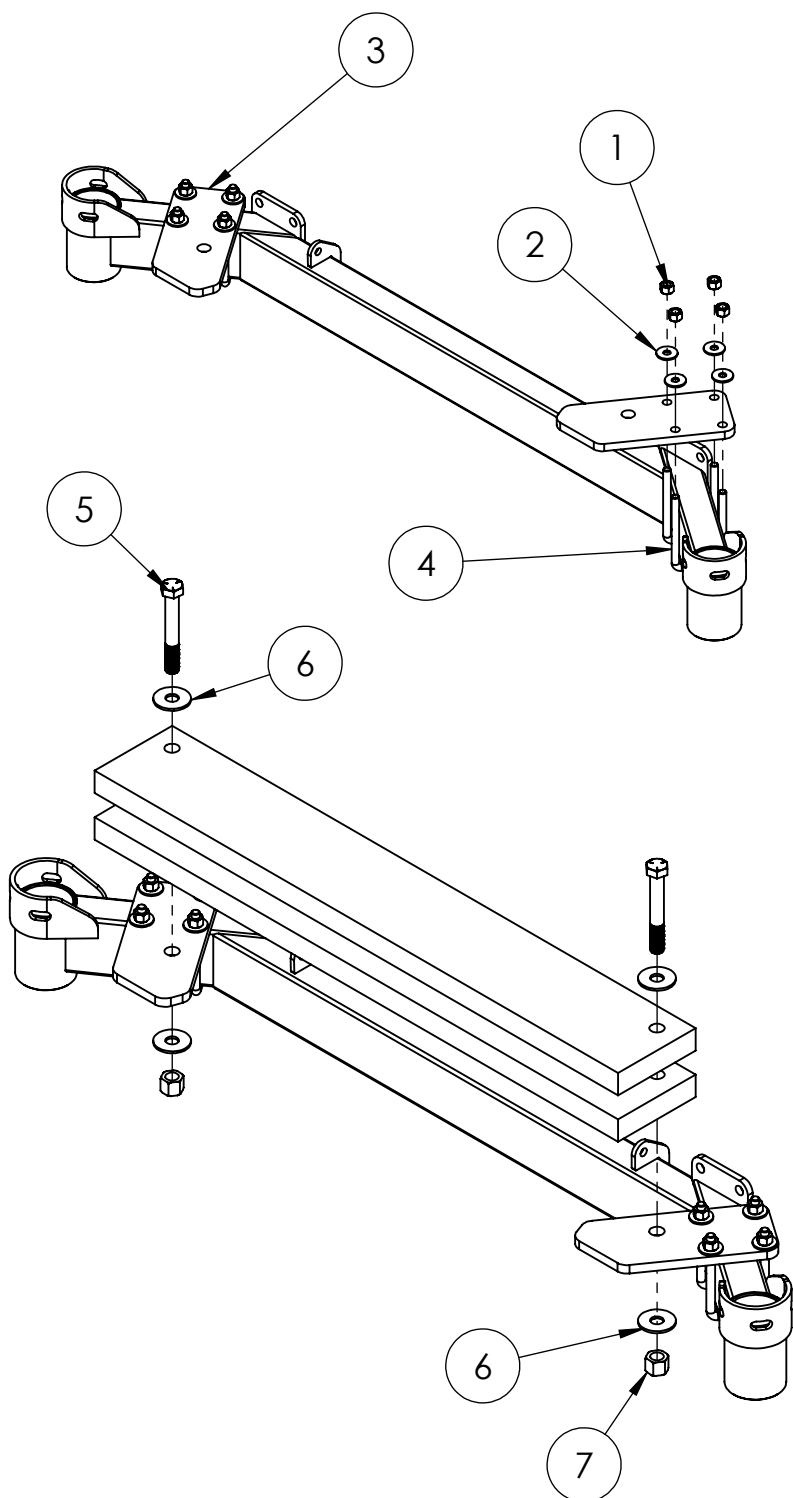
FOR SAFETY, THE FOLLOWING OPERATIONS SHOULD BE DONE WITH;

● ENGINE OFF

● NEGATIVE BATTERY CABLE REMOVED

● KEY OUT OF IGNITION

● WHEELS LOCKED IN PLACE

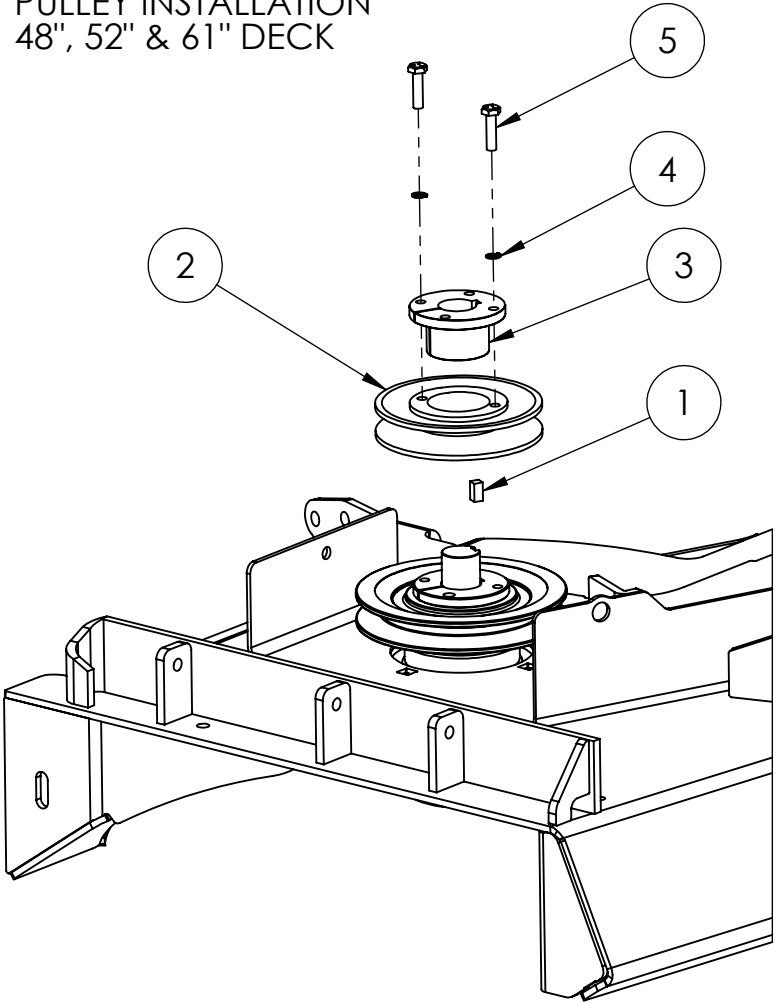


WEIGHT INSTALLATION

- PLACE U-BOLTS (4) ON FRONT WHEEL FRAME AND ALIGN WITH WEIGHT BRACKETS (3)
- SECURE LOOSELY WITH NUTS (1) & WASHERS (2)
- PLACE ONE WEIGHT ON TOP OF WEIGHT BRACKETS TO ALIGN MOUNTING HOLE FOR THE WEIGHTS. TIGHTEN WEIGHT BRACKET HARDWARE.
- PLACE WEIGHTS ON BRACKETS AND INSERT BOLTS (5) WITH WASHER (6) TO ALIGN HOLES IN BRACKETS AND WEIGHTS
- SECURE WITH WASHERS (6) & NUTS (7) AND TIGHTEN ALL HARDWARE

ITEM NO.	PART NUMBER	DESCRIPTION	PARTS BAG/QTY.
1	FAS150801	5/16-18 Nylon Insert Nut	8
2	FAS150812	5/16" Flat Washer	8
3	FRA154711	WEIGHT BRKT, WRIGHT ZTO 2012	2
4	FAS150906	5/16 X 3.5" U-BOLT	4
5	FAS150999	CAP SCREW, 1/2-13 x 3 1/2"	2
6	FAS150825	1/2" Flat Washer	4
7	FAS150824	1/2-13 Nylon Insert Nut	2

WRIGHT
PULLEY INSTALLATION
48", 52" & 61" DECK



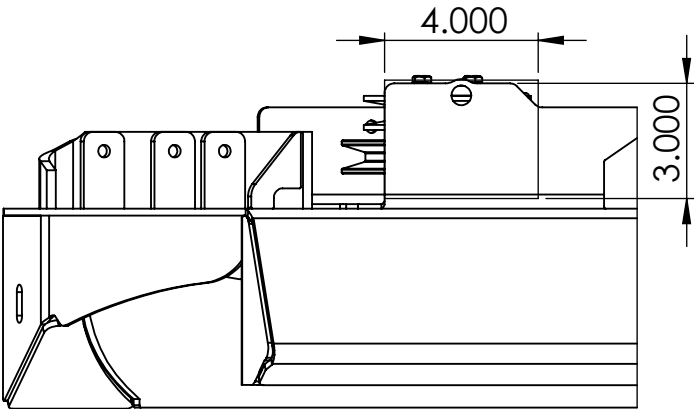
FOR SAFETY, THE FOLLOWING OPERATIONS SHOULD BE DONE WITH;

- ENGINE OFF
- NEGATIVE BATTERY CABLE REMOVED
- KEY OUT OF IGNITION
- WHEELS LOCKED IN PLACE

**PULLEY INSTALLATION
INSTRUCTIONS**

- REMOVE THE DISCHARGE CHUTE & FACTORY PULLEY COVER AND SAVE
- PLACE KEY ① INTO KEYWAY ON SPINDLE
- PLACE DRIVE PULLEY ② ON TOP OF DECK PULLEY OVER THE SHAFT OF THE SPINDLE
- PLACE PULLEY HUB ③ OVER DRIVE PULLEY, CENTER OVER SPINDLE, LINE UP KEYWAYS & UNTHREADED HOLES ON PULLEY HUB WITH THREADED HOLE ON DRIVE PULLEY, AND HAMMER PULLEY HUB INTO PLACE
- INSTALL BOLTS ⑤ WITH LOCK WASHERS ④ THAT COME WITH THE PULLEY HUB INTO PULLEY HUB AND DRIVE PULLEY AND TORQUE TO FACTORY SPECS

ITEM NO.	PART NUMBER	DESCRIPTION	QTY.
1	FAS150899	KEY 1/4 SQ x .50	1
2	OTH150160	4 1/2" A-B PULLEY SHEAVE	1
3	OTH150161	SHEAVE BUSHING, 1" BORE 1/4" KEYWAY	1
4	PULLEY HUB LOCK WASHER	1/4" Lockwasher	2
5	PULLEY HUB BOLT	CAP SCREW 1/4-20 x 1.00	2



WRAPPER CUT

- CUT DECK RIB AS SHOWN TO MAKE ROOM FOR BELT ROUTING (IF APPLICABLE)

2012 WRIGHT

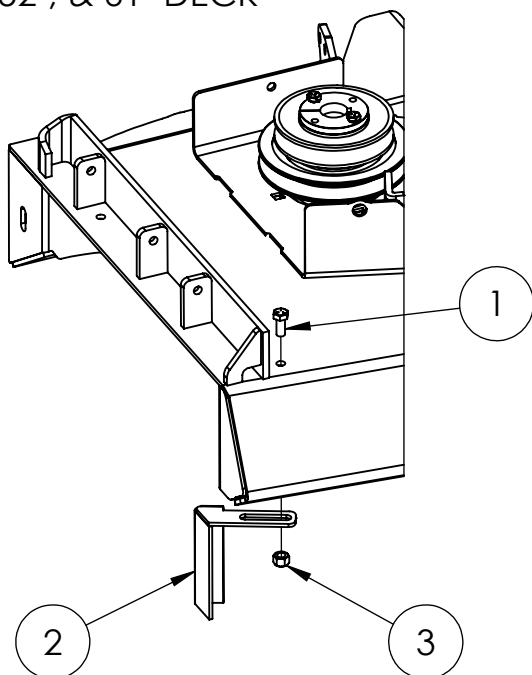
BAFFLE & BLOWER INSTALLATION

48", 52", & 61" DECK

FOR SAFETY, THE FOLLOWING OPERATIONS SHOULD BE DONE WITH;

- ENGINE OFF
- NEGATIVE BATTERY CABLE REMOVED
- KEY OUT OF IGNITION
- WHEELS LOCKED IN PLACE

INSTALLATION INSTRUCTIONS

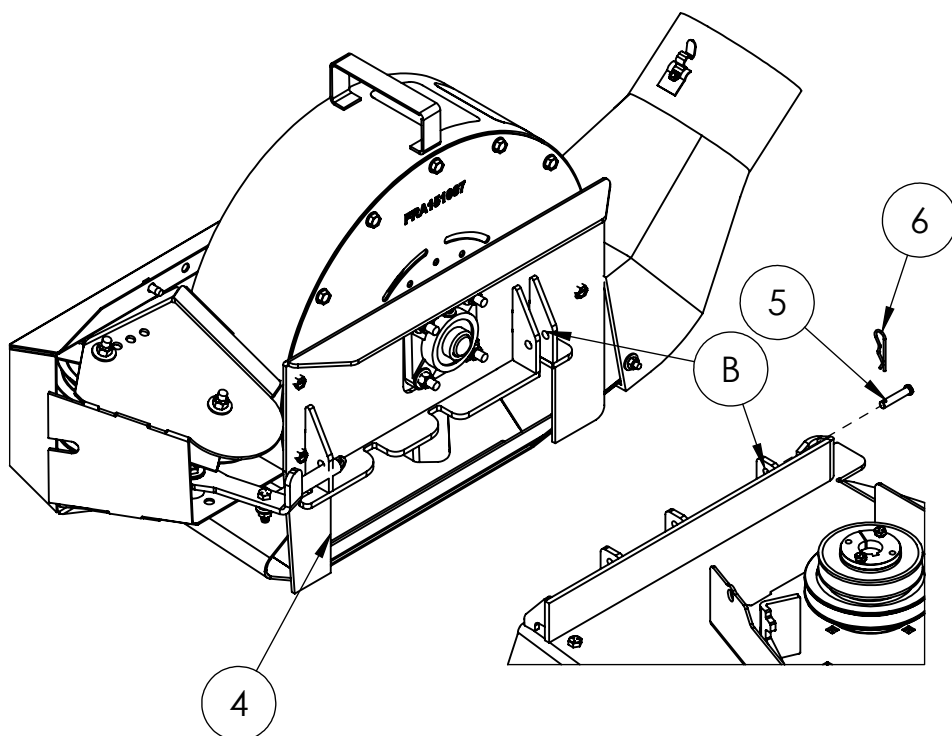


BAFFLE INSTALLATION

- REMOVE FACTORY NUT (3) AND ALIGN BAFFLE (2) WITH FACTORY BOLT (1) & FACTORY DECK BAFFLE.
- MAKE SURE BAFFLE IS FLUSH WITH DISCHARGE EDGE OF DECK, REINSTALL FACTORY NUT AND TORQUE TO SPECS.

ITEM NO.	PART NUMBER	DESCRIPTION	QTY.
1	WRIGHT FACTORY BOLT	BOLT	1
2	FRA154018	BAFFLE, WRIGHT ZTO 2012	1
3	WRIGHT FACTORY NUT	Nut	1
4	FRA154122	Blower Mount, 2012 Wright	1
5	FAS154009	5/16 X 1.5" CLEVIS PIN	1
6	FAS150831	HAIR PIN, 0.091 x 1.875	1

BLOWER INSTALLATION



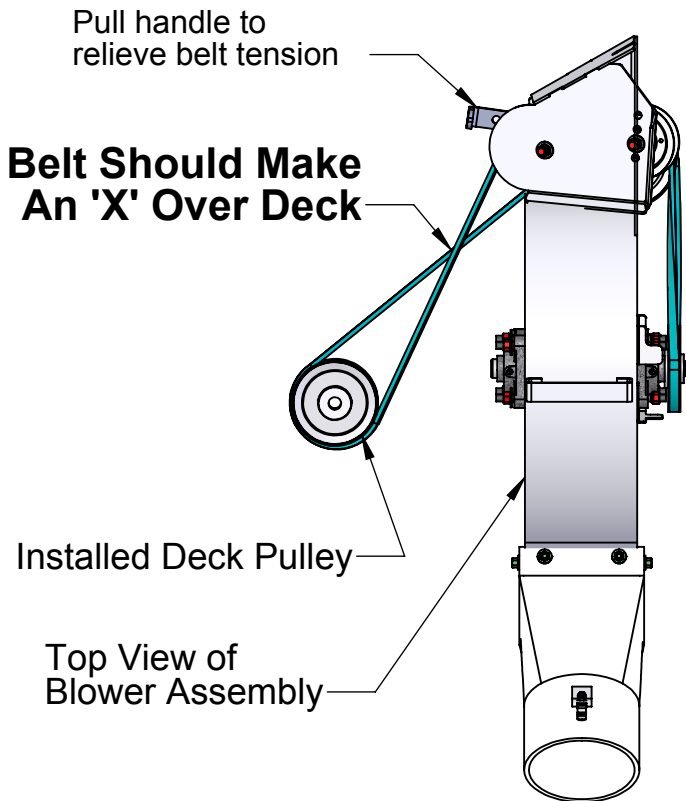
- HOOK FRONT SIDE OF BLOWER MOUNT (4) INTO THE FRONT HOLE ON THE FACTORY DECK MOUNT.
- ROTATE BLOWER ASSEMBLY TILL HOLE ON THE BLOWER MOUNT EARS AND FACTORY DECK MOUNT EAR (B) ALIGN
- INSERT PIN (5) INTO THE HOLES AND SECURE WITH HAIRPIN (6)

2012 WRIGHT

BELT ROUTING AND PULLEY COVER INSTALLATION 48", 52", & 61" DECK

FOR SAFETY, THE FOLLOWING OPERATIONS SHOULD BE DONE WITH;

- ENGINE OFF
- NEGATIVE BATTERY CABLE REMOVED
- KEY OUT OF IGNITION
- WHEELS LOCKED IN PLACE



BELT INSTALLATION INSTRUCTIONS

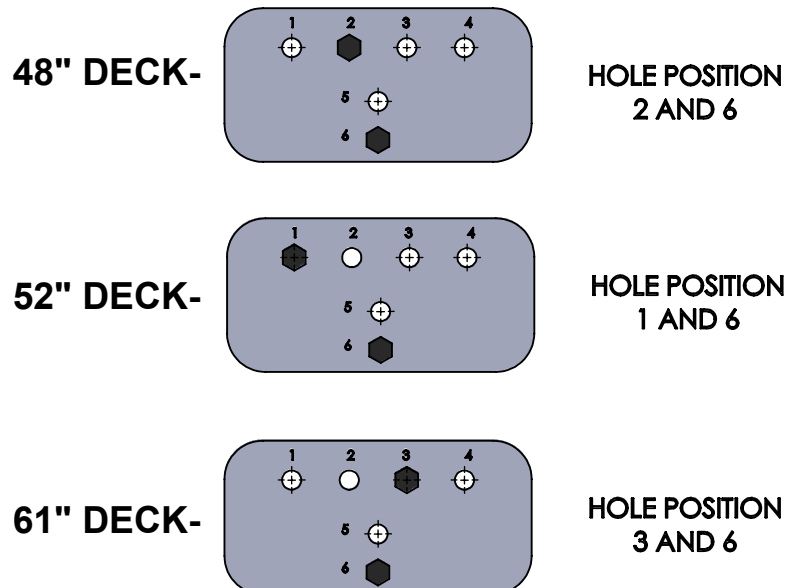
- INSTALL BLOWER ASSEMBLY ONTO MOWER DECK
- PULL ON HANDLE ON FRONT OF BLOWER ASSEMBLY TO EXTEND BELT.
- WITH HANDLE PULLED BACK, PLACE BELT ONTO DECK PULLEY
- MAKE SURE BELT MAKES AN 'X' OVER THE DECK.
- RELEASE HANDLE TO TENSION THE BELT.
- INSTALL DECK PULLEY COVER.

**BELT FIT TIPS

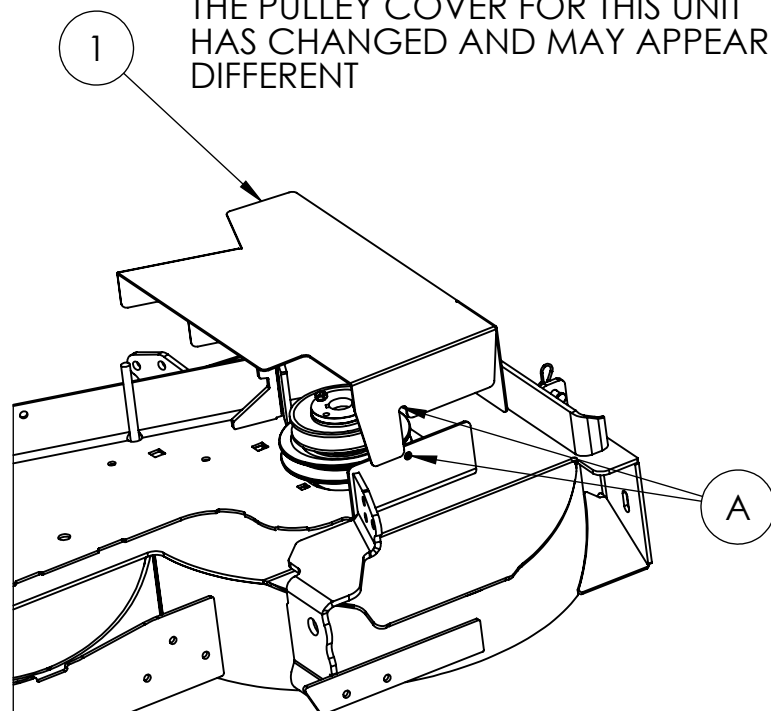
- THE SYSTEM IS DESIGNED TO HAVE A LOOSE FITTING BELT. IT IS NORMAL TO HAVE THE 3-4 INCHES OF MOVEMENT IN THE BELT WITH THE TENSIONER ENGAGED.
- MAKE SURE THE BELT MAKES AN "X", IF IT DOESN'T THE SYSTEM WILL NOT COLLECT CLIPPINGS

ITEM NO.	PART NUMBER	DESCRIPTION	QTY.
1	FRA154525	PULLEY COVER, WRIGHT ZTO 2012	1

IDLER PULLEYS BOLT HOLE POSITIONS



THE PULLEY COVER FOR THIS UNIT HAS CHANGED AND MAY APPEAR DIFFERENT



PULLEY COVER INSTALLATION

- ALIGN PULLEY COVER (1) WITH REAR FACTORY PULLEY COVER MOUNTING POSITION (A) AND SECURE WITH FACTORY HARDWARE

2012 WRIGHT

LEG SET INSTALLATION

48", 52", & 61" DECK

FOR SAFETY, THE FOLLOWING OPERATIONS SHOULD BE DONE WITH;

● ENGINE OFF

● NEGATIVE BATTERY CABLE REMOVED

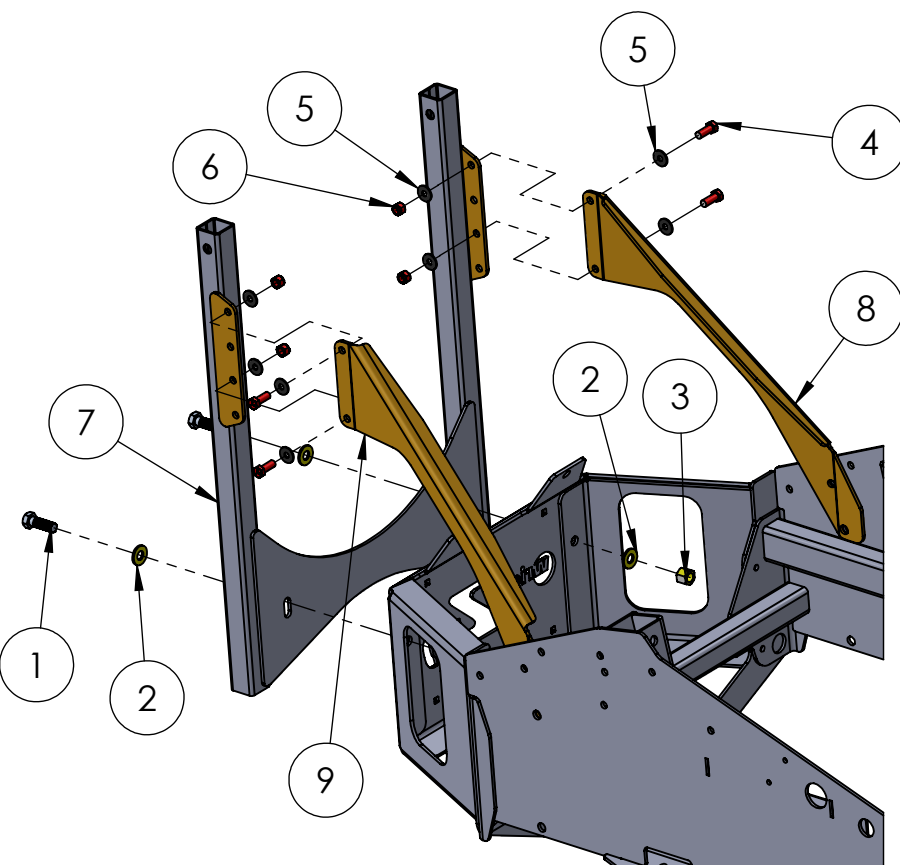
● KEY OUT OF IGNITION

● WHEELS LOCKED IN PLACE

INSTALLATION INSTRUCTIONS

LEG SET INSTALLATION

- ATTACH LEG SET (7) TO MOWER FRAME BY INSERTING BOLTS (1) WITH WASHERS (2) THROUGH SLOTS OF LEG SET INTO HOLES IN BACK OF MOWER FRAME.
- SECURE WITH WASHERS (2) & NUTS (3) LOOSELY
- HOLD ONE OF THE LEG BRACES (9) (8) UP TO ITS MOUNTING POSITION TO DETERMINE THE FACTORY NUTS TO REMOVE FROM THE MOWER FRAME
- REMOVE NUTS, ATTACH LEG BRACES TO BOTH SIDE, AND SECURE LOOSELY WITH FACTORY NUTS
- WITH LEG BRACES ON THE OUTSIDE OF THE LEG SET, ALIGN TOP HOLES OF LEG BRACES & OF THE LEG SET AND ATTACH WITH BOLTS (4) WITH WASHERS (5) AND SECURE LOOSELY WITH WASHERS (5) & NUTS (6)
- REPEAT ABOVE STEP WITH BOTTOM HOLES OF LEG BRACES
- SQUARE UP LEG BRACES WITH LEG SET AND TIGHTEN HARDWARE. TIGHTEN ALL REMAINING HARDWARE



ITEM NO.	PART NUMBER	DESCRIPTION	QTY.
1	FAS150792	CS 1/2-13 X 1 1/2 G5	2
2	FAS150942	1/2" Flat Washer	4
3	FAS150824	1/2-13 Nylon Insert Nut	2
4	FAS150839	CAP SCREW 3/8-16 x1	4
5	FAS150812	5/16" Flat Washer	8
6	FAS150816	3/8-16 Nylon Insert Nut	4
7	FRA150075	Wright Leg Set	1
8	FRA150076	Leg Brace, Left	1
9	FRA150077	Leg Brace, Right	1

*** WHEN CONVERTING AN OLDER BAGGING SYSTEM TO A NEW (2012 OR NEWER) MOWERS IT MAY BE NECESSARY TO DRILL HOLES IN THE LEG SET AND OR THE LEG BRACE.