



Wright Manufacturing, Inc.

Work Inst. Name: **WSZK 41410020 Fuel Tank Replacement**

Inst. Number: **SVC-SWI-0004**

Revision: 01

Issue Date: N/A

Author: Chris Sturtz

Date: 2/26/15

Reviewer: Chris Sturtz

Date: 2/26/15

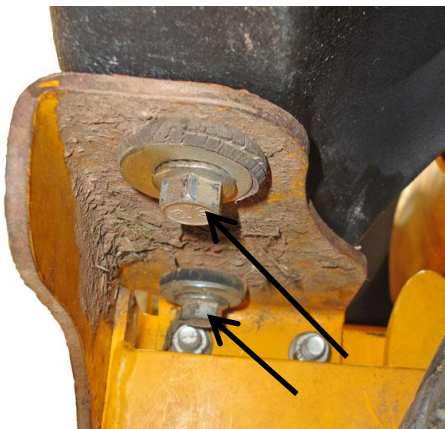
Approver: Chris Sturtz

Date: 2/26/15

1. Remove right fuel tank mounting hardware and fuel line.
 - A. Rear fuel tank stand, 2 bolts. An open end wrench is needed to remove the inboard bolt.
 - B. Front fuel tank stand, 2 bolts.
 - C. Fuel line protector plate, 2 bolts.
 1. Disconnect fuel line from tank fitting.

Note: Re-use mounting hardware.

A



B

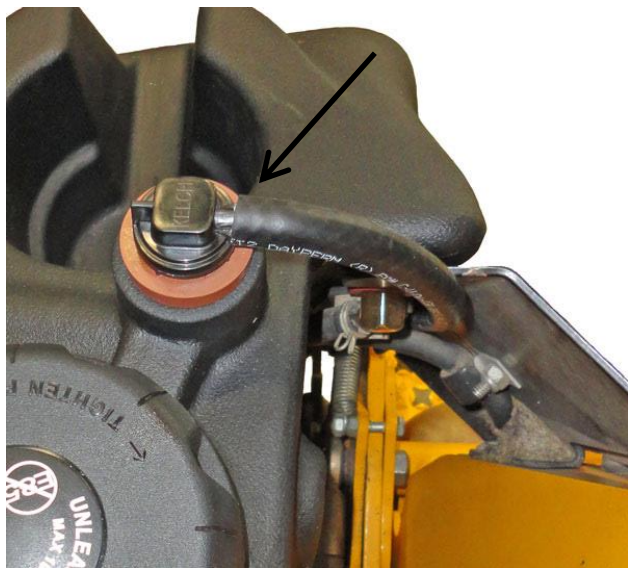


C



2. Install right fuel tank kit. (P/N 95410031)
 - A. With the fuel tank on the mounting brackets, loosely install all mounting bolts.
 - B. Tighten all fuel tank mounting hardware.
 - C. Attach fuel line to fuel tank fitting and clamp.

3. Attach 14" vent line to vent valve and route in-between fuel line and protector plate.



Revision Table

Name	Date	Reason for Changes	Version
Ed Wright	N/A	Initial Release	00
Chris Sturtz	2/26/15	Format Update	01